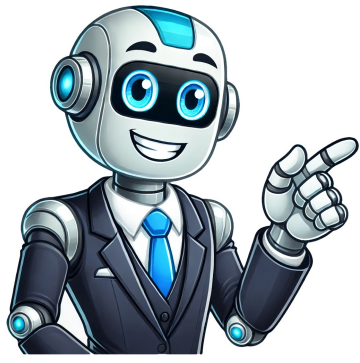


Click to prove  
you're human





































[illegible]

your devices, creating a home media server. File Sharing: Easily share files with friends, family, or colleagues, granting them access to specific folders or files. Before you can access your WD My Cloud on your MacBook Pro, you'll need to set it up. Here's a step-by-step guide: 1. Connect Your WD My Cloud: Plug your WD My Cloud device into your router using an Ethernet cable. 2. Power On: Turn on your WD My Cloud device. 3. Find Your WD My Cloud IP Address: You'll need to determine the IP address assigned to your WD My Cloud. Here's how: Using a Router: Access your router's settings page and look for a list of connected devices. Your WD My Cloud will be listed with its IP address. WD My Cloud Dashboard: If you have already set up your WD My Cloud, you can access its dashboard and find the IP address there. 4. Access the WD My Cloud Dashboard: Open a web browser on your computer and enter the IP address of your WD My Cloud. You'll be directed to the WD My Cloud dashboard. 5. Create an Account: If you haven't already, create a WD My Cloud account. This will allow you to access your files and manage your device remotely. 6. Configure Settings: Customize your WD My Cloud settings, such as user accounts, network settings, and security options. Now that your WD My Cloud is set up, you can connect to it from your MacBook Pro using various methods. Here are the most common approaches: 1. Download the WD My Cloud App: Download and install the official WD My Cloud app from the Mac App Store. 2. Log In: Open the app and log in using your WD My Cloud account credentials. 3. Connect to Your WD My Cloud: The app will automatically search for your WD My Cloud device and connect to it. 4. Access Your Files: Browse through your files and folders, download files to your MacBook Pro, or upload files to your WD My Cloud. 1. Open Finder: Open Finder on your MacBook Pro. 2. Connect to Server: In the Finder window, click "Go" in the menu bar and select "Connect to Server." 3. Enter the Server Address: In the dialog box, enter the IP address of your WD My Cloud (e.g., 'smb://192.168.1.100' ) and click "Connect." 4. Enter Credentials: If prompted, enter your WD My Cloud account username and password. 5. Access Your Files: Your WD My Cloud will appear as a network drive in Finder, allowing you to access and manage your files. 1. Open a Web Browser: Open a web browser on your MacBook Pro. 2. Enter the WD My Cloud IP Address: Enter the IP address of your WD My Cloud in the address bar and press Enter. 3. Log In: Log in to your WD My Cloud account. 4. Access Your Files: You'll be able to access your files and manage your WD My Cloud through the web interface. Once connected, your WD My Cloud offers a range of features to enhance your data management and sharing capabilities. Here are some key features to explore: File Sharing: Share files with others by granting them access to specific folders or files. You can set permissions to control what others can do with the shared files. Remote Access: Access your WD My Cloud from anywhere in the world with an internet connection. This is particularly useful for accessing important files when you're away from home. Automatic Backups: Schedule automatic backups of your computer's files to your WD My Cloud, ensuring data protection against accidental loss or device failure. Media Streaming: Stream your music, photos, and videos to your devices, turning your WD My Cloud into a home media server. Mobile App Access: Download the WD My Cloud mobile app for iOS or Android to access your files from your smartphone or tablet. While connecting your WD My Cloud to your MacBook Pro is usually straightforward, you may encounter some issues. Here are some common problems and their solutions: Connection Issues: Ensure your WD My Cloud is connected to your router using an Ethernet cable and that your router is working properly. Check your internet connection and try restarting your WD My Cloud and router. Access Problems: Verify that you're using the correct IP address and that your WD My Cloud account credentials are correct. Check for any firewall settings that might be blocking access to your WD My Cloud. Slow Performance: Ensure your internet connection is stable and fast enough for optimal performance. Try restarting your WD My Cloud and router to improve performance. Data Loss: Regularly back up your important files to ensure data protection. If you experience data loss, contact WD support for assistance. To maximize the benefits of your WD My Cloud, consider these tips: Regularly Update Your WD My Cloud: Keep your WD My Cloud firmware updated to ensure optimal performance and security. Backup Your WD My Cloud: Create a backup of your WD My Cloud data to an external drive or cloud service for extra protection. Explore Advanced Features: Familiarize yourself with the advanced features of your WD My Cloud, such as file sharing, remote access, and media streaming. Monitor Your WD My Cloud: Keep an eye on your WD My Cloud's health, storage space, and network connection to ensure everything is running smoothly. Connecting your WD My Cloud to your MacBook Pro opens up a world of possibilities for managing, accessing, and sharing your data. By following the steps outlined in this guide, you can easily set up and utilize your WD My Cloud to streamline your workflow, protect your data, and enjoy the convenience of remote access. Q: How do I access my WD My Cloud from a different network? A: You can access your WD My Cloud from any network by using its public IP address. You can find your public IP address by searching "What is my IP address" on a search engine. Q: Can I use a VPN to access my WD My Cloud? A: Yes, you can use a VPN to access your WD My Cloud from a different network. However, you'll need to ensure that your VPN service allows access to local networks. Q: What is the maximum storage capacity of a WD My Cloud device? A: The maximum storage capacity of a WD My Cloud device varies depending on the model. Some models offer up to 24TB of storage space. Q: Can I use my WD My Cloud as a time machine backup drive? A: While you can't use your WD My Cloud as a Time Machine backup drive directly, you can use it as a destination for your Time Machine backups. You can set up your WD My Cloud as a network drive and then choose it as your Time Machine backup destination. Q: What happens if my WD My Cloud device fails? A: If your WD My Cloud device fails, you may lose access to your data. It's important to back up your data regularly to another location, such as an external drive or cloud service, to mitigate this risk.